

## TOK\_2012\_2013\_2félév

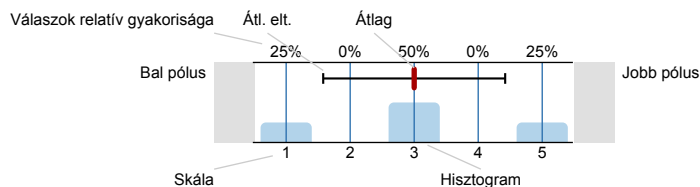
Válaszadók száma = 102



## Felmérés eredmények

## Jelmagyarázat

Kérdésszöveg

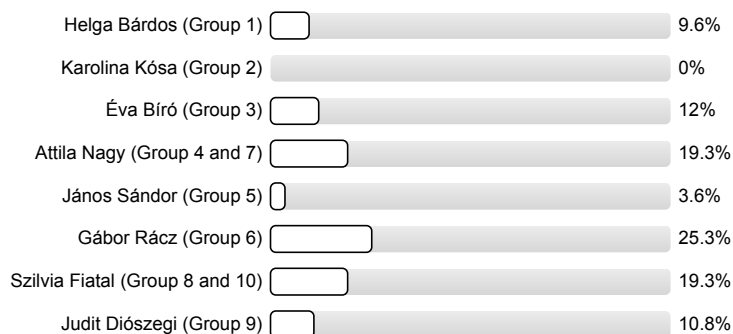


n=mennyiség  
 átl.=átlag  
 elt.=Átl. elt.  
 tart.=tartózkodás

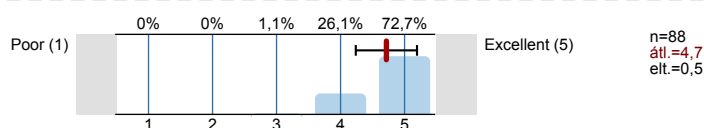
## 1. Teacher

## 1.1) Who was your seminar teacher?

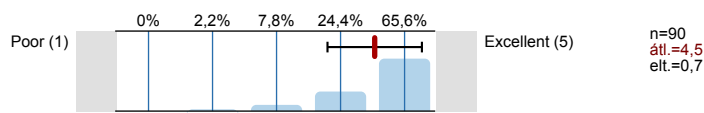
Important:  
 MARK ONLY ONE!



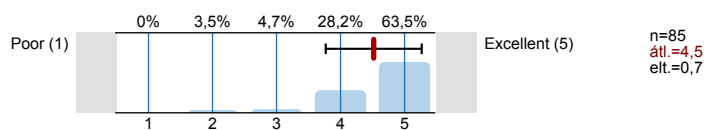
## 1.2) To what extent did the teacher keep to the formal requirements (punctuality)?



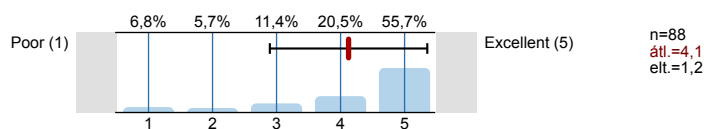
## 1.3) To what extent were her/his explanations logical/understandable?



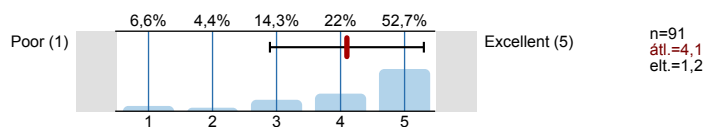
## 1.4) To what extent did she/he allow/require independent and precise work?



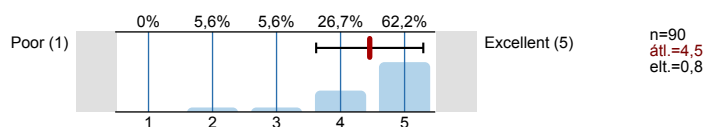
## 1.5) To what extent did the seminars help you to learn the subject?



## 1.6) To what extent did her/his seminars make you interested in the subject?



## 1.7) In sum to what extent did the seminar teacher fulfill your expectation?



Thank you for helping our work with your answers.

# Profil

Összehasonlítás: TOK\_2012\_2013\_2félév

A profilvonalban használt értékek Átlag

## 1. Teacher

1.2) To what extent did the teacher keep to the formal requirements (punctuality)?	Poor (1)					Excellent (5)	n=88	átl.=4,7	md=5,0	elt.=0,5
1.3) To what extent were her/his explanations logical/understandable?	Poor (1)					Excellent (5)	n=90	átl.=4,5	md=5,0	elt.=0,7
1.4) To what extent did she/he allow/require independent and precise work?	Poor (1)					Excellent (5)	n=85	átl.=4,5	md=5,0	elt.=0,7
1.5) To what extent did the seminars help you to learn the subject?	Poor (1)					Excellent (5)	n=88	átl.=4,1	md=5,0	elt.=1,2
1.6) To what extent did her/his seminars make you interested in the subject?	Poor (1)					Excellent (5)	n=91	átl.=4,1	md=5,0	elt.=1,2
1.7) In sum to what extent did the seminar teacher fulfill your expectation?	Poor (1)					Excellent (5)	n=90	átl.=4,5	md=5,0	elt.=0,8